



Block 5, Sheppard Drive, London, SE16 3EJ

A modern two bedroom apartment located in a tranquil residential Bermondsey cul-de-sac.

The apartment boasts a generous reception room, modern kitchen with plenty of storage, a master bedroom with built in storage, second bedroom currently being used as a home office, and a stylish family bathroom. Additional storage can be found in the hallway

South Bermondsey Station for a 5 minute commute to London Bridge is just round the corner as well as a plethora of local amenities. The development is on a cycle quietway.

- Parking Space included
- Good Transport Links
- Residential Location
- Naturally Bright
- Furnished Property
- Spacious Two Bedroom Apartment

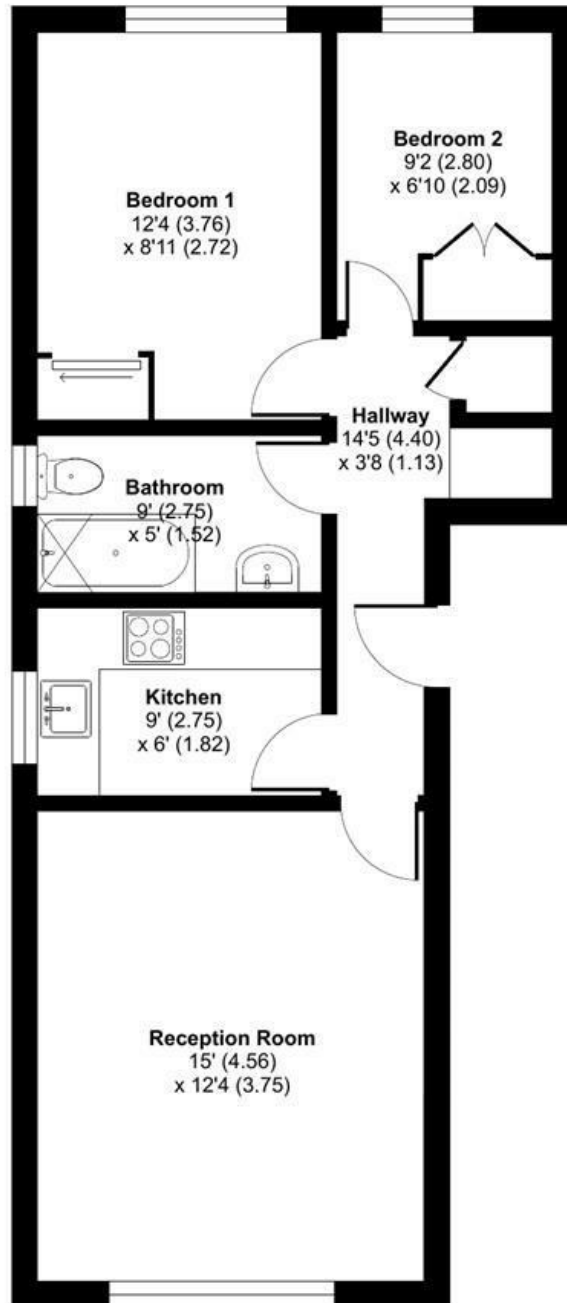
Alex & Matteo
ESTATE AGENTS

£1,800 Per month

Sheppard Drive, London, SE16

Approximate Area = 549 sq ft / 51 sq m

For identification only - Not to scale



FIRST FLOOR

Alex & Matteo
ESTATE AGENTS



Floor plan produced in accordance with RICS Property Measurement 2nd Edition, Incorporating International Property Measurement Standards (IPMS2 Residential). © nichecom 2025. Produced for Alex & Matteo Estate Agents. REF: 1279616

Energy Efficiency Rating		
	Current	Potential
Very energy efficient - lower running costs		
(92 plus) A		
(81-91) B		
(69-80) C	70	75
(55-68) D		
(39-54) E		
(21-38) F		
(1-20) G		
Not energy efficient - higher running costs		
England & Wales		
EU Directive 2002/91/EC		